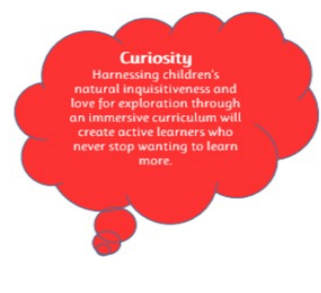




## Headteacher's News

Good afternoon all,



### This week at Priory

We have had another busy week, today we celebrated World Religion Day and the children were able to wear the traditional national dress of their heritage or a heritage of their choice. They had the opportunity to participate in some multicultural activities. Please see photos in newsletter.

All the children also had the opportunity this week, to try a fencing session with the Little Musketeers.

### Upcoming events

Week beginning 22<sup>nd</sup> January - learning together week

Week beginning 30<sup>th</sup> January - National story telling week

Wednesday 31<sup>st</sup> January - Parent forum- years 3 and 4

Friday 2<sup>nd</sup> February - Year 6 Trip to Natural History Museum

Other events coming up:

Year 2 Windsor Castle Trip - 1st March

Parents Evenings - 5th & 6th March

World Book day - 8<sup>th</sup> March

Stem week - 11<sup>th</sup> March

Ramadan - 18<sup>th</sup> March

Colour Run/Holi - 25<sup>th</sup> March



## Weekly attendance percentages: w/c 8th January 2024

Whole school - 94%

Year 1 - 96%

Year 2 - 92%

Year 3 - 94%

Year 4 - 96%

Year 5 - 93%

Year 6 - 94%

Congratulations to Cherry Class with 100% the highest attendance this week!

*Congratulations!*



## Important Dates:

[Click here](#) to link to the school calendar  
[Click here](#) to see term dates for 2023-2024



## Leaflets and Letters

Please [click here](#) to go to our leaflets page on the website and choose external providers:

- Oral Health Week Campaign
- Mental Health Support Team
- Free Slough RFC taster session for year 4 boys and girls
- Help with pressures currently being faced by A&E at WPH



## Sign of the Week

World Religion Day

<https://youtu.be/xqT6BU2tvhE>



## Peek at the Week

Please follow link for this week's  
<://www.prioryschool.co.uk/peek-at-the-week-1/>

## SEN Resources

ACCESS THE SENSORY PROCESSING WORKSHOP ONLINE - BOOK A PLACE NO REFERRAL NEEDED  
[Occupational Therapy | Children Young People and Families Online Resource](#)  
([berkshirehealthcare.nhs.uk](http://berkshirehealthcare.nhs.uk))

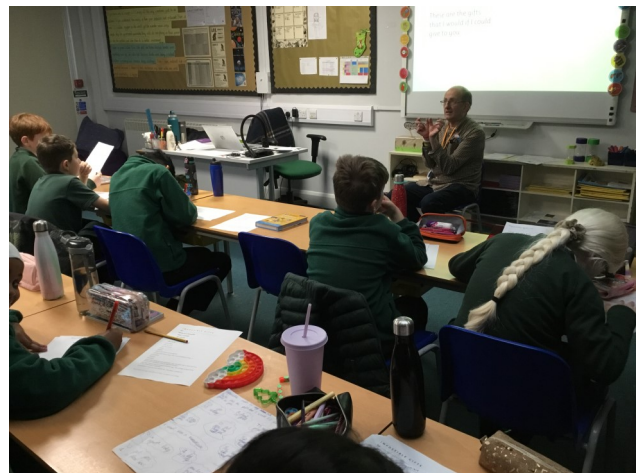
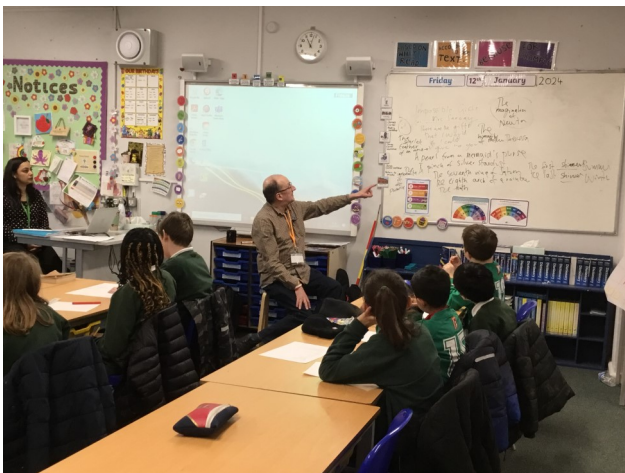
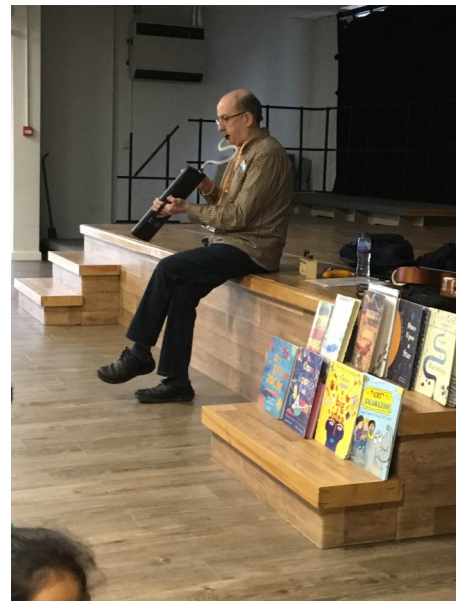
ACCESS FREE RESOURCES AND HELP FOR SENSORY, FINE AND GROSS MOTOR SKILLS  
[Health and Development | Children Young People and Families Online Resource](#)  
([berkshirehealthcare.nhs.uk](http://berkshirehealthcare.nhs.uk))

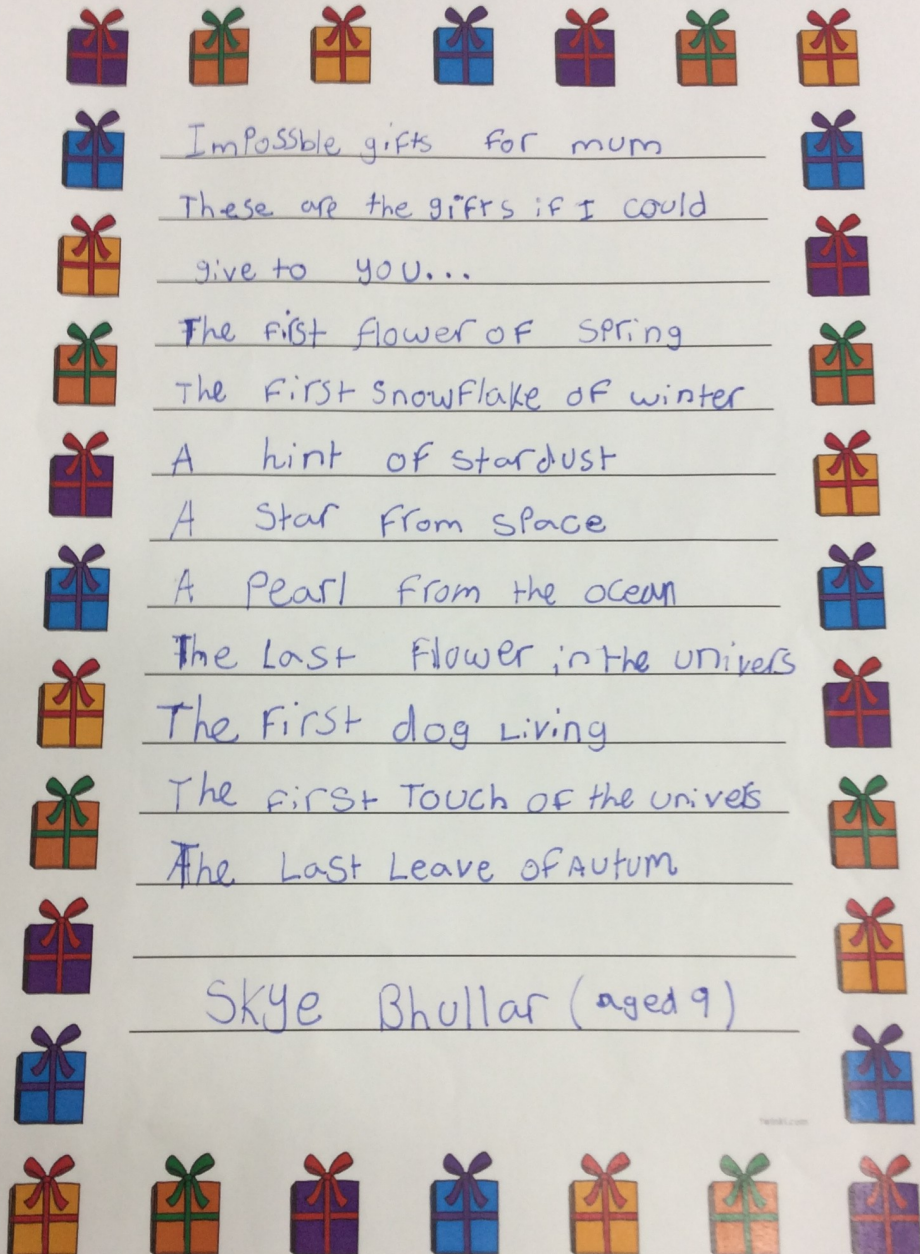


## Year 5 Poetry Workshop

Last Friday, 12th January year 5 had a visit from the poet James Carter, he spoke to the year 5 & 6 children in assembly and then ran workshops for all the children in year 5. This culminated in the children writing their own poems and some of the children were picked to present their poems to parents in a sharing assembly. After school James held a book signing session for the rest of the school.

Here are some photos of the day and some of the poetry that was created by the children.







## Year 6 Little Musketeers Fencing Taster Session

On Monday and Tuesday of this week, the children were treated to a fencing taster session with the Little Musketeers. Here are some pictures of year 6 enjoying their session.





## Priory World Religion/Multicultural Day

Please see below some of the wonderful outfits worn by the children today to represent their heritage.

### Year 6





## Nursery







## Orchard News

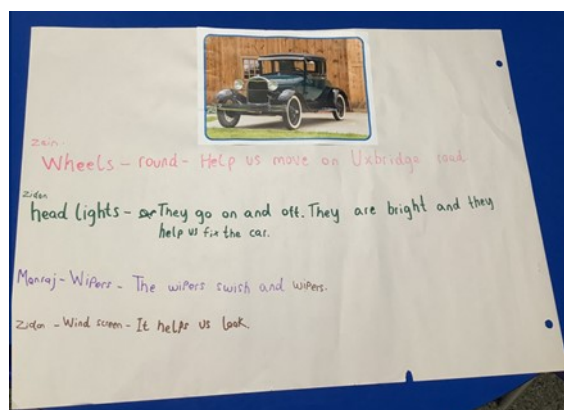
This term our topic is Tremendous Transport, this week we have been talking about different types of vehicles and where they go as well as continuing to read and study our topic books 'We all go travelling by' and 'Cars, trains, ships and planes'.

<https://www.amazon.co.uk/Cars-Trains-Ships-Planes-Encyclopedia/dp/1409348504>

<https://www.youtube.com/watch?v=Kpoze1QKOCY>

This week in Literacy, Apples and Plums have been building/matching descriptive sentences using colourful semantics like 'I see a yellow bus', as well as practicing our comprehensive skills to answer 'what and where' questions about the vehicles we see in our topic book.

Cherries have been identifying the features of a car using a communication board and information gathered from their topic book.

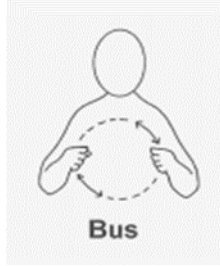




We have been learning the key vocabulary and the Makaton signs within the topic book. Here are some visuals if you would like to practice at home!



Boat



Bus



Aeroplane

This week in Maths, Apples and Plums have been sequencing double digits, practicing their skills in one to one correspondence counting amounts from 0-20, as well as adding two groups of single digits together.

Cherries have been recapping their learnt knowledge of place value and one to one correspondence.





## MEASLES ALERT EMAIL SENT TO PRIMARY AND SECONDARY CARE IN SOUTH EAST REGION 04/01/2024

Dear Primary and Secondary care colleagues

We wrote to you in June 2023 about a potential increase in Measles cases and actions that should be put in place to recognise and notify suspected cases, and to ensure staff are suitably protected against measles infection.

We are now wanting to alert you about a **significant outbreak of Measles in the West Midlands** where there is **evidence of established community transmission**, along with an increase in confirmed measles cases in the London area.

We have not, as yet, had any confirmed Measles cases in the South East, and therefore currently rashes are more than likely to be for other reasons.

However, with mixing of family and friends during the recent holiday period, **we may now start to see confirmed cases of measles occurring in the SE Region** and therefore it is **important to consider a Measles diagnosis, especially if someone has had recent links to this area.**

We would just like to remind you of the following 4 key points:

**PATIENTS WITH A RASH AND FEVER SHOULD BE ISOLATED**

**YOUR DEPARTMENT OR PRACTICE WILL NEED TO UNDERTAKE A LOOK BACK FOR ANY MEASLES EXPOSURES**

**NOTIFY YOUR HEALTH PROTECTION TEAM OF ANY SUSPECTED MEASLES CASES ON CLINICAL DIAGNOSIS**

**ENSURE ALL STAFF HAVE IMMUNITY TO MEASLES (i.e., 2X MMR OR HAVE POSITIVE ANTIBODY TESTS FOR MEASLES AND RUBELLA)**

**NON-IMMUNE STAFF WILL NEED TO BE EXCLUDED FROM WORK FOR 21 DAYS FOLLOWING EXPOSURE TO A CONFIRMED MEASLES CASE**

**ENSURE YOU ENCOURAGE PATIENTS TO HAVE THEIR MMR VACCINE**

Please also see this summary poster with important information for staff awareness



## Parent and Carer Autism Online support session

**Friday 2nd February 10am - 11.15am**

### Join our online session to:

- learn and discuss, how to have meaningful communication with your child
- how to support your child with communicating with other people

How to communicate with your **Autistic** child



**Sign Up Today!**

Available for families residing in, or have a registered GP in East Berkshire

**To book your place contact GEMS:**  
[Gems.4Health@nhs.net](mailto:Gems.4Health@nhs.net)  
0800 999 1342

Please provide your full name, email address, phone number, child's pathway (suspected/waiting assessment/diagnosed) and local authority



**Berkshire Healthcare**  
NHS Foundation Trust

**Are you worried?  
Sad?  
Angry?  
Can't sleep?  
Do you have butterflies  
in your tummy?**

If you feel any of these things, **talk to your parent or carer**, your teachers or another **adult you trust**.

They can help you to get help from us.



**Talk to an adult**

We are the **Mental Health Support Team** and we're here to **help you feel better**.



[cypf.berkshirehealthcare.nhs.uk](http://cypf.berkshirehealthcare.nhs.uk)



**Wednesdays, 10<sup>th</sup> Jan; 7<sup>th</sup> Feb; 13<sup>th</sup> March; 17<sup>th</sup> April; 8<sup>th</sup> May; 12<sup>th</sup> June; 3<sup>rd</sup> July 2024**

**Community Parent/Carer Support Group, Slough**

A support group for family members who have children/young people with additional needs living within Slough.

A safe and supportive space for sharing experiences and gaining support with the unique challenges faced by families of children with additional needs.

Each session will include an hours topic around being a parent of a child with additional needs. The remainder of the session will be for discussion of the topic and social support time.

---

#### **DATE & TIME**

Monthly- See above dates  
10-12pm

---

#### **VENUE**

Farnham Common Village Hall  
Victoria road Farnham Common,  
Slough SL2 3NL

#### **COST**

FREE  
(Refreshments provided)

#### **FURTHER INFORMATION**

Charlie Taylor  
07831409731  
[charlie@parentingspecialchildren.co.uk](mailto:charlie@parentingspecialchildren.co.uk)

**Children welcome under parent supervision**



## Extended Care Provision



Just a reminder that the new Extended Care provision is now in operation. The company is called In-to-Care, if you want further information please [Click Here](#)